

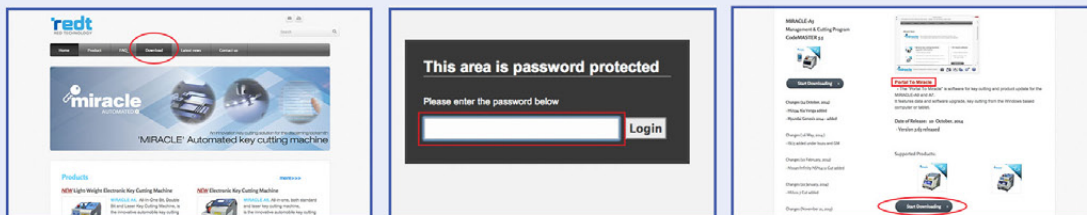
HOW TO UPDATE

COMPUTERISED PORTABLE KEY CUTTING MACHINE

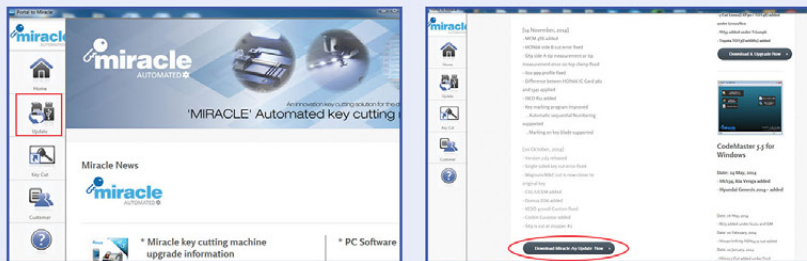
✓ Updating ✓ Programming ✓ Calibrating



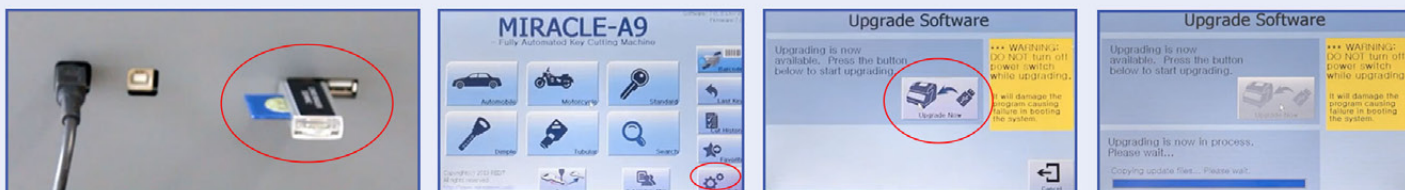
- Go to www.redt-miracle-key.com to download **Miracle Portal** first. Choose **Download** from the menu option. Enter password (to get your unique password email to orders@lockdecoders.com) Scroll down to Miracle portal and press **Download**. Save and run the program file.



- Open **Miracle Portal**. Choose **Update** from the side menu. Scroll down for latest updates. Download and save to memory card.



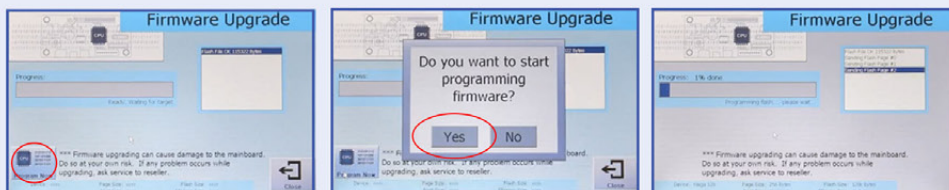
- Insert the memory card into the USB slot on your machine. The update window automatically pops up. Click **Upgrade now** and follow the on-screen instructions.



- Once update has finished go to **Setup > Upgrade Firmware**. Press **Yes** to upgrade firmware.



- Once the preparation is complete press **Program now** and click **Yes** to start programming the firmware. **DO NOT TURN THE POWER OFF**



- After the upgrade you MUST calibrate cutter distance.** Failing to do so may cause problems when cutting. To calibrate the probe to cutter distance go to **Setup > Clamp Calibration** and press **Start**. Always perform tool length measurement operation after the calibration to achieve maximum accuracy when using the machine. To measure the tool length choose **Setup > Tool Length Measurement**. **If you own more than one clamp (e.g. Dimple Key Clamp) you MUST perform calibration and measurement for each extra clamp.**



- Now change cutter to decoder by following the on screen instructions. Remove and replace the probe from machine. Click **Prepare tip aligned laser key**. Your machine is now up-to-date, calibrated and ready to use.

